



Commissioned by:

Visit Herts



**VISIT HERTS**

Economic Impact of Tourism

East Herts - 2023 Results

Produced by:

Destination Research  
[www.destinationresearch.co.uk](http://www.destinationresearch.co.uk)

<b>Contents</b>	<b>Page</b>
<b><u>Introduction and Contextual Analysis</u></b>	<b>3</b>
<b><u>Headline Figures</u></b>	<b>6</b>
<b><u>Volume of Tourism</u></b>	<b>8</b>
<b>Staying visitors in the county context</b>	<b>9</b>
<b>Staying visitors - accommodation type</b>	<b>10</b>
Trips by accommodation	
Nights by accommodation	
Spend by accommodation	
<b>Staying visitors - purpose of trip</b>	<b>11</b>
Trips by purpose	
Nights by purpose	
Spend by purpose	
<b>Day visitors</b>	<b>12</b>
<b>Day visitors in the county context</b>	<b>12</b>
<b><u>Value of Tourism</u></b>	<b>13</b>
<b>Expenditure associated with trips</b>	<b>14</b>
Direct expenditure associated with trips	
Other expenditure associated with tourism activity	
Direct turnover derived from trip expenditure	
Supplier and income induced turnover	
Total local business turnover supported by tourism activity	
<b><u>Employment</u></b>	<b>16</b>
<b>Direct</b>	<b>17</b>
Full-time equivalent	
Estimated actual jobs	
<b>Indirect &amp; induced employment</b>	<b>17</b>
Full-time equivalent	
Estimated actual jobs	
<b>Total jobs</b>	<b>18</b>
Full-time equivalent	
Estimated actual jobs	
<b>Tourism jobs as a percentage of total employment</b>	<b>18</b>
<b><u>Appendix I - Cambridge Model - Methodology</u></b>	<b>20</b>

## **Introduction**

This report examines the volume and value of tourism and the impact of visitor expenditure on the local economy in 2023 and provides comparative data against the previously published data for 2021, as well as providing headline comparisons against 2022 and 2019 in order to monitor the recovery following the COVID-19 pandemic.

The Cambridge Model is a constantly evolving product. During the pandemic, all data collection for the key national tourism surveys used in the model ceased. This was followed with a change in the way domestic and overseas tourism statistics were captured. Data collection for domestic tourism moved from two surveys, one for day visits (GBDVS) and one for overnight stays (GBTS) based on face-to-face interviewing, to a new combined online survey, collecting data on both domestic overnight trips as well as domestic day trips. The revised methodology applied to data for 2023 was also applied to previously published data for 2022, the only other comparative full year of new data now available. Please note that while the methodology for national 2021 data may differ due to the pandemic and pauses in data collection, this does not impact the validity of the results and please refer to the 2021 report for additional information and context.

Responding to these changes, we adopted a hybrid data approach with a two-stage evaluation process. First, the Cambridge Model disaggregates regional tourism data into sub-regional areas, using a top-down approach. It then pairs this with bottom-up initiatives, including contextual and sector-specific data from third-party sources and detailed destination-level business performance data captured by or on behalf of our destination partners.

This evolving methodology has been pivotal in our ability to produce a dynamic and reliable picture of tourism trends throughout the pandemic years and beyond. It also ensures that our results are as timely, accurate, consistent, and comparable as they can be. Some examples of additional data sources introduced in the last 5 years are:

- Attractions data - ALVA (Association of Leading Visitor Attractions)
- Short-term rental stock and occupancy - Lighthouse / AirDNA
- Local serviced accommodation data
- Tourism business counts - Inter Departmental Business Register (IDBR)
- UK inflation data - Consumer Prices Index (CPI, CPIH), Retail Prices Index (RPI)
- UK economy forecasts - Office for Budget Responsibility: Economic and fiscal outlook
- Footfall data (town centres, large retail outlets and car parks).

## **Domestic Tourism**

### **Overnights visits**

The revised 2023 data shows a decline in overnight trips by 5% compared to 2022 for Britain and England (2022 was generally viewed as a particularly good post pandemic year for domestic tourism). The total overnight trip spend was down 2% for Britain and 3% for England. When taking inflation into account, the total overnight trip spend for both England and Britain was down 9%, compared to 2022.

The East of England registered 8.9 million domestic overnight trips during 2023 (down 13% from 10.3 million trips in 2022). These trips contributed a total of £2.02 billion in spend (down 9% from £2.21 billion in 2022 and down 15% in real terms, accounting for inflation).

### Accommodation occupancy

#### East of England - Serviced Accommodation Occupancy

	Jan	Feb	Mar	Apr	May	Jun	Jul	Aug	Sep	Oct	Nov	Dec	Year
<b>2019</b>	63%	72%	72%	74%	78%	81%	84%	79%	81%	80%	75%	67%	76%
<b>2022</b>	55%	70%	74%	76%	76%	82%	85%	81%	83%	80%	79%	73%	76%
<b>2023</b>	69%	77%	78%	80%	81%	83%	84%	81%	84%	80%	76%	71%	79%

It is possible that hotel occupancy measures overstate trips compared to previous years because of ongoing workforce shortages. Hospitality businesses' coping strategies for workforce shortages included closing on certain days or reducing the number of rooms available. This means that the number of rooms occupied could be lower while the occupancy rate was the same, due to fewer available rooms.

#### East of England - Self Catering Unit Occupancy

	Jan	Feb	Mar	Apr	May	Jun	Jul	Aug	Sep	Oct	Nov	Dec	Average
<b>2019</b>	51%	50%	49%	56%	55%	58%	53%	67%	55%	54%	47%	50%	54%
<b>2023</b>	42%	46%	44%	49%	47%	49%	53%	57%	48%	44%	39%	44%	47%

Short-term holiday rentals experienced a surge since the pandemic. However, the sector is now feeling the effects of the cost-of-living crisis, and an increasing oversupply of holiday lets. According to AirDNA, new listings for homes in the UK jumped 22% year-on-year in 2023.

### Day visits

#### Visits to visitor attractions

Visitor Attraction Trends in England 2023 report (VisitEngland, July 2024) shows that admissions volume for participating attractions in 2023 were 11% up (196.14 million) on 2022 (176.87 million), but 28% down on 2019 (273.75 million). The sector's growth was mainly fuelled by the return of overseas visitors and an increase in school trips in 2023.

There was an 8% increase in 2023 adult admission fees but was not sufficient to absorb the rising supplier and energy costs, a general decline in staycations and the wet weather (affecting outdoor attractions).

Overall, visitors to ALVA's top 374 sites (Association of Leading Visitor Attractions) were up 19% year-on-year in 2023 to 146.6 million as the sector continues its climb back to pre-pandemic levels. Overall, current numbers are 11% down on 2019.

The East of England experienced a 6% year-on-year rise in admissions in 2023, based on the volume of visits to the same attractions. The region was least affected by the pandemic, and has been the quickest to recover, now only 4% behind 2019 levels.

The total number of visits to ALVA (Association of Leading Visitor Attractions) sites in the East of England in 2023 was 11% up on the previous year. The 2023 figures are in line with the volume of visits to the same attractions in 2019.

### **Overseas tourism**

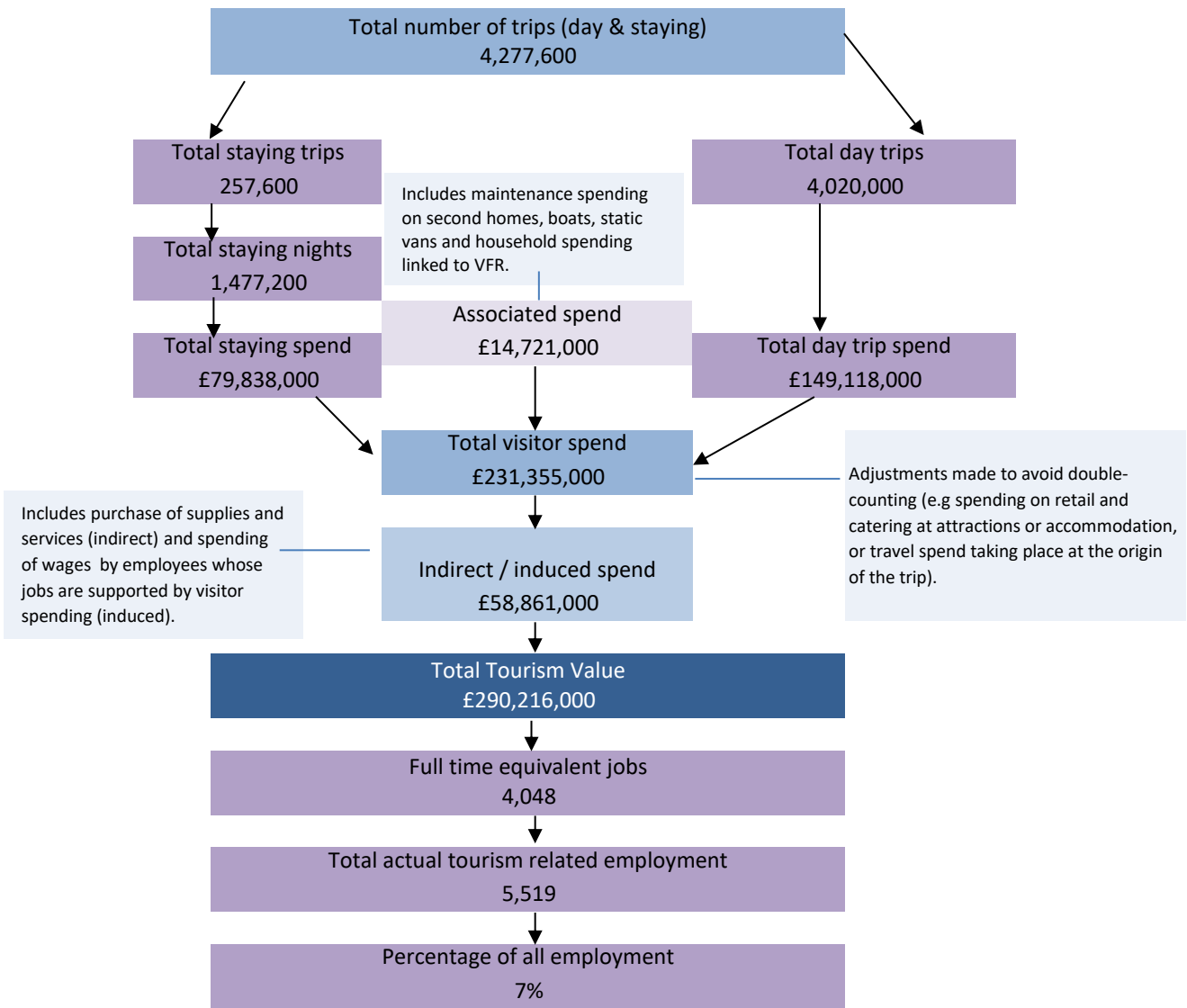
Visitor numbers: Official data from the Office for National Statistics (ONS) showed that there were 38.0 million overseas tourists visiting the UK last year (up 21% vs 2022). Overall, 292.9m nights were spent in the UK in 2023, up 1% vs 2019 and up 11% vs 2022.

Visitor spending: In nominal terms, spend has been setting records, although not in real terms i.e. adjusting for inflation. Spend per visit has been almost tracking inflation, therefore the total value of spend has been almost tracking the volume of visits in real terms i.e. adjusting for inflation. Inbound visitors spent a record £31.1 billion during 2023, up 17% vs 2022. Taking inflation into account, visitor spend was up 9% vs 2022.

The East of England registered 2.2 million inbound visits during 2023 (up 9% from 2.0 million trips in 2022). These trips contributed a total of £1.1 billion in spend (up 11% from £1.0 billion in 2022).

## Economic Impact of Tourism – Headline Figures

## East Herts - 2023 Results

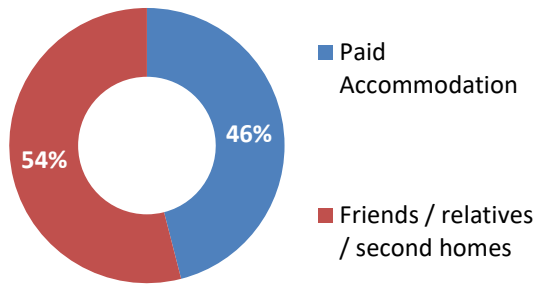


	2023	2022	2021	2019	Year-on-year comparison		
					23 v 22	23 v 21	23 v 19
<b>Day Trips</b>							
Day trips Volume	4,020,000	4,222,000	3,298,000	4,231,000	-5%	22%	-5%
Day trips Value	£149,118,000	£164,402,000	£123,260,000	£160,058,000	-9%	21%	-7%
<b>Overnight trips</b>							
Number of trips	257,600	220,200	198,400	251,000	17%	30%	3%
Number of nights	1,477,200	1,326,400	1,080,700	1,445,000	11%	37%	2%
Trip value	£79,838,000	£69,582,000	£43,714,000	£68,479,000	15%	83%	17%
<b>Total Value</b>	<b>£290,216,000</b>	<b>£292,705,000</b>	<b>£211,576,000</b>	<b>£292,922,000</b>	<b>-1%</b>	<b>37%</b>	<b>-1%</b>
<b>Actual Jobs</b>	<b>5,519</b>	<b>5,549</b>	<b>4,854</b>	<b>5,497</b>	<b>-1%</b>	<b>14%</b>	<b>0%</b>
	2023	2022	2021	2019	23 v 22	23 v 21	23 v 19
Number of nights	5.73	6.02	5.45	5.76	-4.8%	5.1%	-0.5%
Spend x staying trip	£309.93	£315.99	£220.33	£272.82	-1.9%	40.7%	13.6%
Spend x night	£54.05	£52.46	£40.45	£47.39	3.0%	33.6%	14.0%
Spend x day trip	£37.09	£38.94	£37.37	£37.83	-4.8%	-0.7%	-2.0%

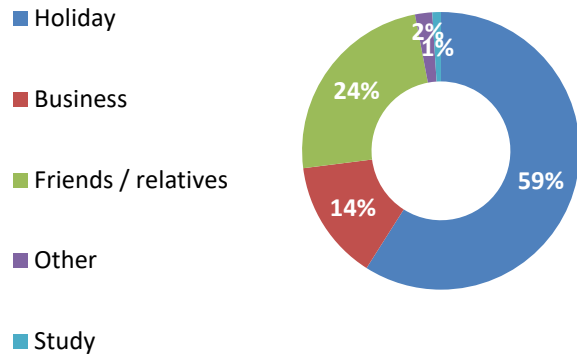
**Economic Impact of Tourism – Headline Figures**

**East Herts - 2023 Results**

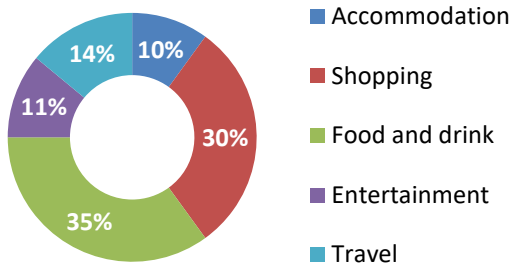
**Trips by type of accommodation**



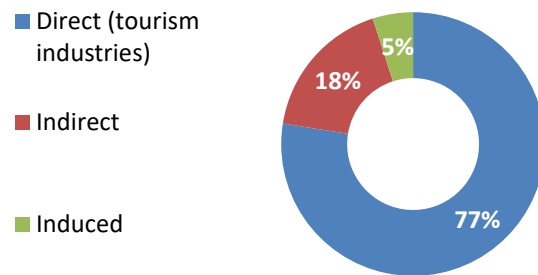
**Trips by Purpose**



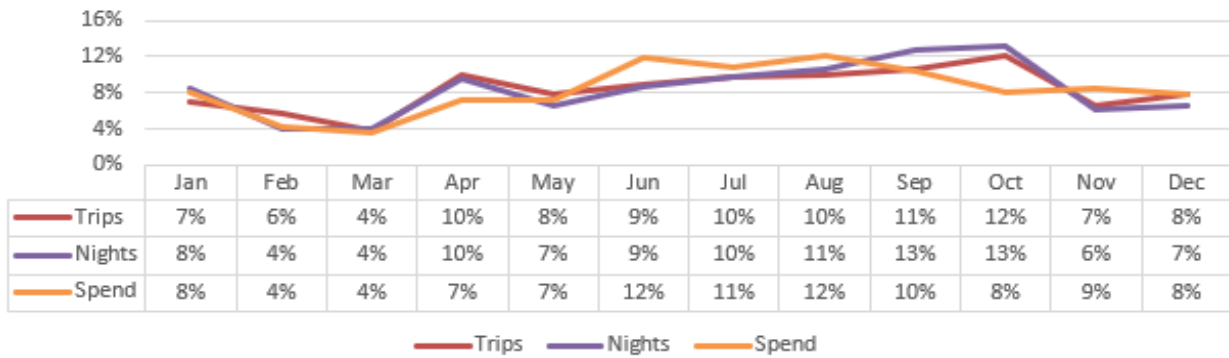
**Breakdown of Expenditure**



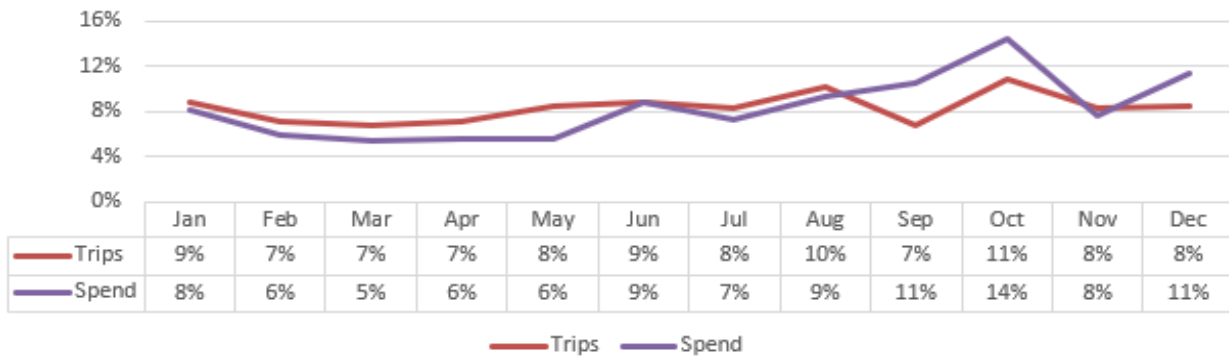
**Type of Employment**



**Domestic Overnight Trips - East of England - 2023**



**Tourism Day Trips - East of England - 2023**



Source: VisitBritain. Reference: East of England

## Volume of Tourism



## Staying visits in the county context

## East Herts - 2023 Results

All figures have been rounded and some tables may show slight discrepancy between totals and sub totals.

Staying trips in the county context	Domestic trips ('000)	Overseas trips ('000)
North Herts	153	38
Stevenage	127	25
East Herts	209	49
Broxbourne	108	28
Welwyn Hatfield	154	41
St Albans	226	48
Dacorum	230	46
Three Rivers	71	28
Watford	169	30
Hertsmere	127	30
<b>Hertfordshire</b>	<b>1,574</b>	<b>364</b>

Staying nights in the county context	Domestic nights ('000)	Overseas nights ('000)
North Herts	709	290
Stevenage	521	160
East Herts	955	522
Broxbourne	528	218
Welwyn Hatfield	689	642
St Albans	945	382
Dacorum	973	378
Three Rivers	393	190
Watford	646	211
Hertsmere	562	232
<b>Hertfordshire</b>	<b>6,921</b>	<b>3,225</b>

Expenditure in the county context	Domestic spend (millions)	Overseas spend (millions)
North Herts	£35.5	£15.7
Stevenage	£30.9	£8.9
East Herts	£49.3	£30.6
Broxbourne	£23.2	£11.8
Welwyn Hatfield	£37.5	£38.3
St Albans	£54.9	£21.4
Dacorum	£59.5	£21.7
Three Rivers	£14.4	£10.0
Watford	£42.3	£12.1
Hertsmere	£29.8	£12.6
<b>Hertfordshire</b>	<b>£377.3</b>	<b>£183.1</b>

## Staying Visitors - Accommodation Type

## East Herts - 2023 Results

### Trips by Accommodation

	UK		Overseas		Total	
Serviced	84,000	40%	2,400	5%	86,400	34%
Self-catering	3,000	1%	2,100	4%	5,100	2%
Camping	10,000	6%	2,100	4%	12,100	5%
Static caravans	0	0%	0	0%	0	0%
Group/campus	0	0%	0	0%	0	0%
Paying guest	0	0%	1,100	2%	1,100	0%
Second homes	1,000	0%	1,300	3%	2,300	1%
Boat moorings	0	0%	0	0%	0	0%
Other	9,000	4%	5,100	11%	14,100	5%
Friends & relatives	102,000	49%	34,500	71%	136,500	53%
<b>Total 2023</b>	<b>209,000</b>		<b>48,600</b>		<b>257,600</b>	
Comparison 2021	180,000		18,400		198,400	
Difference	16%		164%		30%	

### Nights by Accommodation

	UK		Overseas		Total	
Serviced	206,000	22%	5,200	1%	211,200	14%
Self-catering	14,000	1%	204,600	39%	218,600	15%
Camping	73,000	8%	13,200	3%	86,200	6%
Static caravans	0	0%	0	0%	0	0%
Group/campus	0	0%	0	0%	0	0%
Paying guest	0	0%	12,100	2%	12,100	1%
Second homes	3,000	0%	28,900	6%	31,900	2%
Boat moorings	0	0%	0	0%	0	0%
Other	47,000	5%	6,100	1%	53,100	4%
Friends & relatives	612,000	64%	252,100	48%	864,100	58%
<b>Total 2023</b>	<b>955,000</b>		<b>522,200</b>		<b>1,477,200</b>	
Comparison 2021	911,000		169,700		1,080,700	
Difference	5%		208%		37%	

### Spend by Accommodation Type

	UK		Overseas		Total	
Serviced	£23,695,000	48%	£1,121,000	4%	£24,816,000	31%
Self-catering	£1,408,000	3%	£13,858,000	45%	£15,266,000	19%
Camping	£1,478,000	3%	£498,000	2%	£1,976,000	3%
Static caravans	£0	0%	£0	0%	£0	0%
Group/campus	£0	0%	£0	0%	£0	0%
Paying guest	£0	0%	£639,000	2%	£639,000	1%
Second homes	£210,000	0%	£953,000	3%	£1,163,000	1%
Boat moorings	£0	0%	£0	0%	£0	0%
Other	£2,371,000	5%	£785,000	2%	£3,156,000	4%
Friends & relatives	£20,110,000	41%	£12,712,000	42%	£32,822,000	41%
<b>Total 2023</b>	<b>£49,272,000</b>		<b>£30,566,000</b>		<b>£79,838,000</b>	
Comparison 2021	£36,411,000		£7,303,000		£43,714,000	
Difference	35%		319%		83%	

Serviced accommodation includes hotels, guesthouses, inns, B&B's and serviced farmhouse accommodation. Paying guest refers to overseas visitors staying in private houses, primarily language school students. Other trips includes nights spent in transit, in lorry cabs and other temporary accommodation.

## Staying Visitors - Purpose of Trip

## East Herts - 2023 Results

### Trips by Purpose

	UK		Overseas		Total	
Holiday	125,000	60%	26,700	55%	151,700	59%
Business	36,000	17%	1,000	2%	37,000	14%
Friends & relatives	44,000	21%	18,000	37%	62,000	24%
Other	4,000	2%	1,900	4%	5,900	2%
Study	0	0%	1,000	2%	1,000	1%
<b>Total</b>	<b>2023</b>	<b>209,000</b>	<b>48,600</b>		<b>257,600</b>	
Comparison	2021	180,000	18,400		198,400	
Difference		16%	164%		30%	

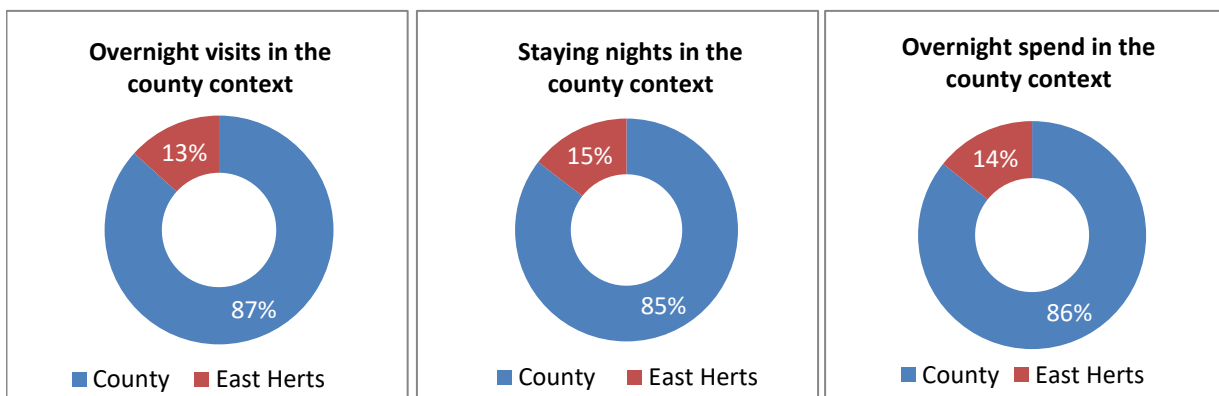
### Nights by Purpose

	UK		Overseas		Total	
Holiday	601,000	63%	208,800	40%	809,800	55%
Business	134,000	14%	15,700	3%	149,700	10%
Friends & relatives	201,000	21%	240,200	46%	441,200	30%
Other	19,000	2%	41,800	8%	60,800	4%
Study	0	0%	15,700	3%	15,700	1%
<b>Total</b>	<b>2023</b>	<b>955,000</b>	<b>522,200</b>		<b>1,477,200</b>	
Comparison	2021	911,000	169,700		1,080,700	
Difference		5%	208%		37%	

### Spend by Purpose

	UK		Overseas		Total	
Holiday	£19,709,000	40%	£17,116,000	56%	£36,825,000	46%
Business	£16,260,000	33%	£1,223,000	4%	£17,483,000	22%
Friends & relatives	£12,318,000	25%	£9,170,000	30%	£21,488,000	27%
Other	£985,000	2%	£2,140,000	7%	£3,125,000	4%
Study	£0	0%	£917,000	3%	£917,000	1%
<b>Total</b>	<b>2023</b>	<b>£49,272,000</b>	<b>£30,566,000</b>		<b>£79,838,000</b>	
Comparison	2021	£36,411,000	£7,303,000		£43,714,000	
Difference		35%	319%		83%	

### Proportion of staying visits in the county context

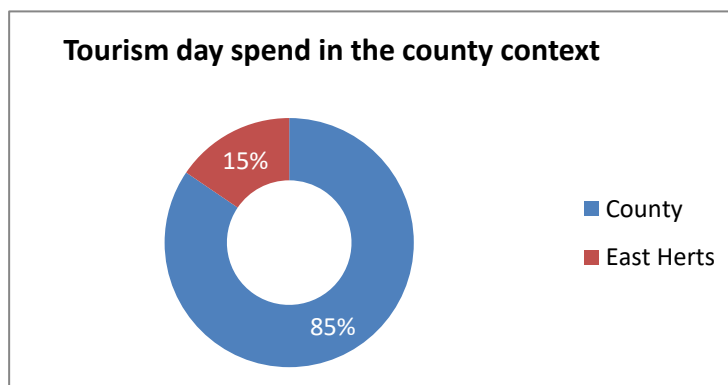
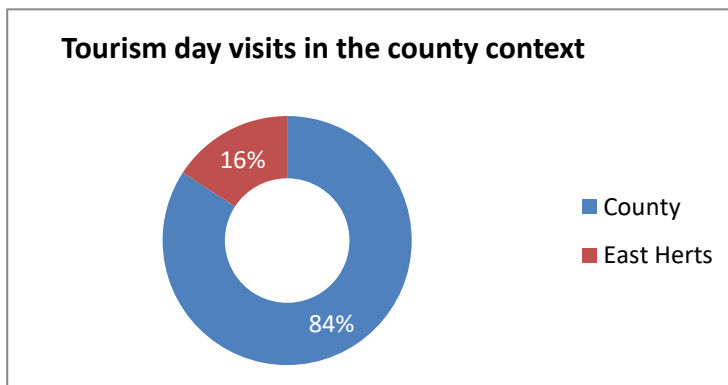


**Total Volume and Value of Day Trips**

		<b>Trips</b>	<b>Spend</b>
<b>Total</b>	<b>2023</b>	<b>4,020,000</b>	<b>£149,118,000</b>
<b>Comparison</b>	<b>2021</b>	<b>3,298,000</b>	<b>£123,260,000</b>
<b>Difference</b>		<b>22%</b>	<b>21%</b>

**Day Visitors in the County Context**

<b>District</b>	<b>Day Visits (millions)</b>	<b>Day visits Spend (millions)</b>
North Herts	2.8	£99.7
Stevenage	2.2	£79.5
East Herts	4.0	£149.1
Broxbourne	1.7	£65.7
Welwyn Hatfield	1.7	£66.3
St Albans	1.8	£68.4
Dacorum	3.2	£118.6
Three Rivers	4.1	£167.3
Watford	2.2	£84.6
Hertsmere	1.8	£63.2
<b>Hertfordshire</b>	<b>25.5</b>	<b>£962.4</b>



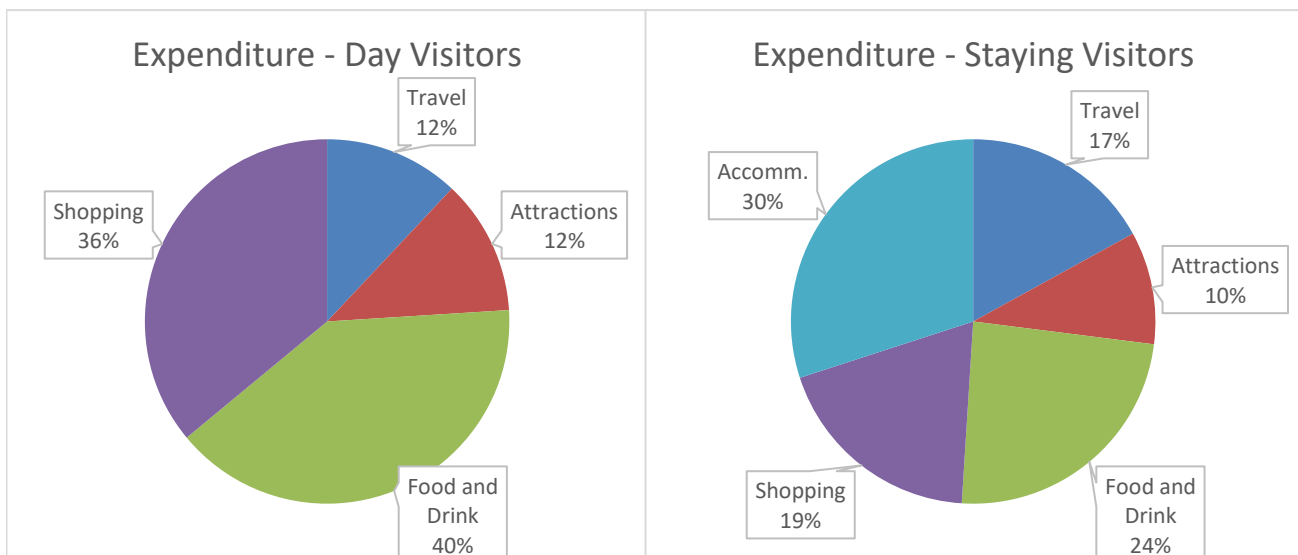
## Value of Tourism

## Expenditure Associated with Trips

## East Herts - 2023 Results

### Direct Expenditure Associated with Trips

	Accomm.	Shopping	Food and Drink	Attractions	Travel	Total
UK Tourists	£15,274,300	£5,912,600	£12,810,700	£4,927,500	£10,346,900	£49,272,000
Overseas tourists	£8,558,500	£8,864,100	£7,030,200	£3,056,600	£3,056,600	£30,566,000
<b>Total Staying</b>	<b>£23,832,800</b>	<b>£14,776,700</b>	<b>£19,840,900</b>	<b>£7,984,100</b>	<b>£13,403,500</b>	<b>£79,838,000</b>
<b>Total Staying (%)</b>	<b>30%</b>	<b>19%</b>	<b>24%</b>	<b>10%</b>	<b>17%</b>	<b>100%</b>
<b>Total Day Visitors</b>	<b>£0</b>	<b>£53,682,500</b>	<b>£59,647,200</b>	<b>£17,894,200</b>	<b>£17,894,100</b>	<b>£149,118,000</b>
<b>Total Day Visitors (%)</b>	<b>0%</b>	<b>36%</b>	<b>40%</b>	<b>12%</b>	<b>12%</b>	<b>100%</b>
<b>Total 2023</b>	<b>£23,832,800</b>	<b>£68,459,200</b>	<b>£79,488,100</b>	<b>£25,878,300</b>	<b>£31,297,600</b>	<b>£228,956,000</b>
<b>%</b>	<b>10%</b>	<b>30%</b>	<b>35%</b>	<b>11%</b>	<b>14%</b>	<b>100%</b>
Comparison 2021	£11,073,600	£41,005,800	£60,960,800	£20,905,400	£33,028,400	£166,974,000
Difference	115%	67%	30%	24%	-5%	37%



### Other Expenditure Associated with Tourism Activity

Other expenditure associated with tourism activity - Estimated spend				
Second homes	Boats	Static vans	Friends & relatives	Total
£321,000	£0	£0	£14,400,000	£14,721,000

Spend on second homes is assumed to be an average of £2,150 on rates, maintenance, and replacement of furniture and fittings. Spend on boats assumed to be an average of £2,150 on berthing charges, servicing and maintenance and upgrading of equipment. Static van spend arises in the case of vans purchased by the owner and used as a second home. Expenditure is incurred in site fees, utility charges and other spending and is estimated at £2,150. Additional spending is incurred by friends and relatives as a result of people coming to stay with them. A cost of £210 per visit has been assumed based on national research for social and personal visits.

## Direct Turnover Derived From Trip

## East Herts - 2023 Results

Business turnover arises as a result of tourist spending, from the purchase of supplies and services locally by businesses in receipt of visitor spending and as a result of the spending of wages in businesses by employees whose jobs are directly or indirectly supported by tourism spending.

		<b>Staying Visitors</b>	<b>Day Visitors</b>	<b>Total</b>
Accommodation		£24,109,000	£1,194,000	£25,303,000
Retail		£14,758,000	£53,393,000	£68,151,000
Catering		£19,060,000	£57,931,000	£76,991,000
Attractions		£8,316,000	£19,394,000	£27,710,000
Transport		£8,156,000	£10,323,000	£18,479,000
Non-trip spend		£14,721,000	£0	£14,721,000
<b>Total Direct</b>	<b>2023</b>	<b>£89,120,000</b>	<b>£142,235,000</b>	<b>£231,355,000</b>
Comparison	<b>2021</b>	<b>£56,347,000</b>	<b>£113,273,000</b>	<b>£169,620,000</b>
Difference		58%	26%	36%

Adjustments have been made to recognise that some spending on retail and food and drink will fall within attractions or accommodation establishments. It is assumed that 40% of travel spend will take place at the origin of the trip rather than at the destination.

## Supplier and Income Induced Turnover

		<b>Staying Visitors</b>	<b>Day Visitors</b>	<b>Total</b>
Indirect spend		£17,872,000	£24,338,000	£42,210,000
Non-trip spending		£3,695,000	£0	£3,695,000
Income induced		£9,713,000	£3,243,000	£12,956,000
<b>Total</b>	<b>2023</b>	<b>£31,280,000</b>	<b>£27,581,000</b>	<b>£58,861,000</b>
Comparison	<b>2021</b>	<b>£19,311,000</b>	<b>£22,645,000</b>	<b>£41,956,000</b>
Difference		62%	22%	40%

Income induced spending arises from expenditure by employees whose jobs are supported by tourism spend.

## Total Local Business Turnover Supported by Tourism Activity – Value of Tourism

		<b>Staying Visitors</b>	<b>Day Visitors</b>	<b>Total</b>
Direct		£89,120,000	£142,235,000	£231,355,000
Indirect		£31,280,000	£27,581,000	£58,861,000
<b>Total Value</b>	<b>2023</b>	<b>£120,400,000</b>	<b>£169,816,000</b>	<b>£290,216,000</b>
Comparison	<b>2021</b>	<b>£75,658,000</b>	<b>£135,918,000</b>	<b>£211,576,000</b>
Difference		59%	25%	37%

## Employment



The model generates estimates of full time equivalent jobs based on visitor spending. The total number of ‘actual’ jobs will be higher when part time and seasonal working is taken into account. Conversion of full time equivalent jobs into actual jobs relies on information from business surveys in the sectors receiving visitor spending. A new full time equivalent tourism job is created with every £54,000 increase in tourism revenue.

**Direct Employment**

Full time equivalent (FTE)						
	Staying Visitors		Day Visitors		Total	
Accommodation	363	29%	18	1%	381	13%
Retail	128	10%	465	27%	593	20%
Catering	277	23%	841	49%	1,118	38%
Entertainment	142	12%	330	19%	472	16%
Transport	53	4%	68	4%	121	4%
Non-trip spend	273	22%	0	0%	273	9%
<b>Total FTE</b>	<b>2023</b>	<b>1,236</b>	<b>1,722</b>		<b>2,958</b>	
Comparison	2021	978	1,722		2,700	
Difference		26%	0%		10%	
Estimated actual jobs						
	Staying Visitors		Day Visitors		Total	
Accommodation	537	31%	27	1%	564	13%
Retail	193	11%	697	27%	890	21%
Catering	415	24%	1,261	50%	1,676	39%
Entertainment	200	12%	466	18%	666	16%
Transport	75	4%	95	4%	170	4%
Non-trip spend	311	18%	0	0%	311	7%
<b>Total Actual</b>	<b>2023</b>	<b>1,731</b>	<b>2,546</b>		<b>4,277</b>	
Comparison	2021	1,330	2,540		3,870	
Difference		30%	0%		11%	

**Indirect & Induced Employment**

Full time equivalent (FTE)			
	Staying Visitors	Day Visitors	Total
Indirect jobs	399	451	850
Induced jobs	180	60	240
<b>Total FTE</b>	<b>2023</b>	<b>579</b>	<b>511</b>
Comparison	2021	397	466
Difference		46%	10%
Estimated actual jobs			
	Staying Visitors	Day Visitors	Total
Indirect jobs	455	514	969
Induced jobs	205	68	273
<b>Total Actual</b>	<b>2023</b>	<b>660</b>	<b>582</b>
Comparison	2021	453	531
Difference		46%	10%

## Total Tourism Jobs

## East Herts - 2023 Results

Actual jobs are estimated from surveys of relevant businesses at locations in England and take account of part time and seasonal working.

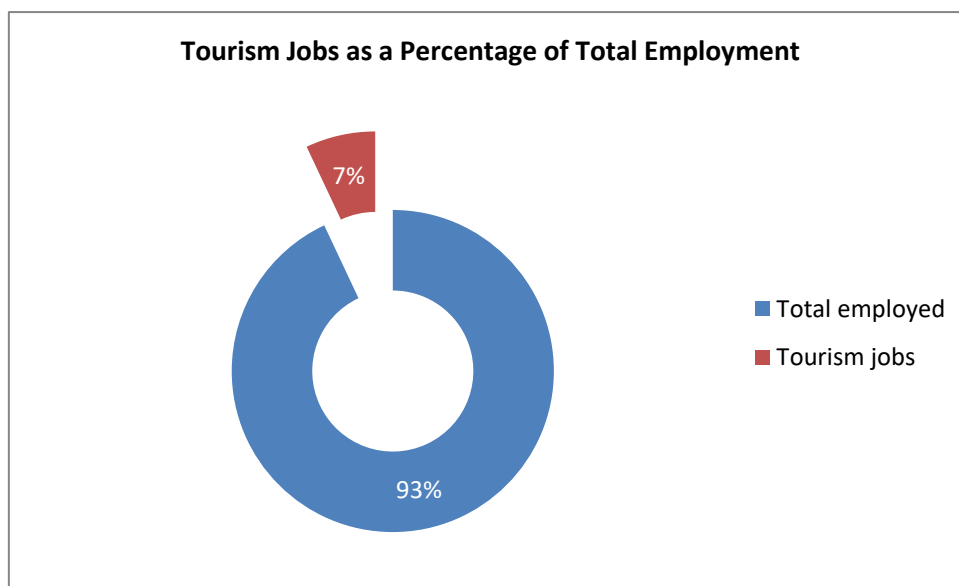
Full time equivalent (FTE)						
	Staying Visitors		Day Visitors		Total	
Direct	1,236	68%	1,722	77%	2,958	73%
Indirect	399	22%	451	20%	850	21%
Induced	180	10%	60	3%	240	6%
<b>Total FTE</b>	<b>2023</b>	<b>1,815</b>		<b>2,233</b>		<b>4,048</b>
Comparison	<b>2021</b>	<b>1,375</b>		<b>2,188</b>		<b>3,563</b>
<b>Difference</b>		<b>32%</b>		<b>2%</b>		<b>14%</b>

Estimated actual jobs						
	Staying Visitors		Day Visitors		Total	
Direct	1,731	72%	2,546	81%	4,277	77%
Indirect	455	19%	514	17%	969	18%
Induced	205	9%	68	2%	273	5%
<b>Total Actual</b>	<b>2023</b>	<b>2,391</b>		<b>3,128</b>		<b>5,519</b>
Comparison	<b>2021</b>	<b>1,783</b>		<b>3,071</b>		<b>4,854</b>
<b>Difference</b>		<b>34%</b>		<b>2%</b>		<b>14%</b>

### Tourism Jobs as a Percentage of Total Employment

	Staying Visitors		Day Visitors		Total	
Total employed		76,000		76,000		76,000
Tourism jobs		2,391		3,128		5,519
<b>Proportion all jobs</b>		<b>3%</b>		<b>4%</b>		<b>7%</b>
Comparison	<b>2021</b>	<b>1,783</b>		<b>3,071</b>		<b>4,854</b>
<b>Difference</b>		<b>34%</b>		<b>2%</b>		<b>14%</b>



**The key 2023 results of the Economic Impact Assessment are:**

**4.3 million trips** were undertaken in the area.

**4.0 million** day trips.

**0.3 million** overnight visits.

**1.5 million** nights in the area as a result of overnight trips.

**£231 million** spent by tourists during their visit to the area.

**£19 million** spent on average in the local economy each month.

**£80 million** generated by overnight visits.

**£149 million** generated from day trips.

**£290 million** spent in the local area as result of tourism, taking into account multiplier effects.

**5,519 jobs** supported, both for local residents and from those living nearby.

**4,277 tourism jobs** directly supported.

**1,242 non-tourism related jobs** supported linked to multiplier spend from tourism.

## **Appendix I - Introduction about Cambridge Model**

This report examines the volume and value of tourism and the impact of that expenditure on the local economy. The figures were derived using the Cambridge Economic Impact Model and the research was undertaken by Destination Research.

### **Data sources**

The main national surveys used as data sources in stage one include:

- Domestic tourism statistics: An online survey collecting data on both domestic overnight trips as well as domestic day trips.
- International Passenger Survey (IPS) information on overseas visitors to the UK.

These surveys provide information down to a regional level. In order to disaggregate data to a local level the following information sources are used:

- Records of known local accommodation stock
- VisitEngland's surveys of Visits to Attractions, which provides data on the number of visitors to individual tourist attractions
- Attractions data supplied by ALVA (Association of Leading Visitor Attractions)
- Short-term rental stock and occupancy - Lighthouse / AirDNA
- Hotel market data and benchmarking – STR
- Latest estimates of resident population as based on the Census of Population
- Selected data from ONS employment-related surveys
- Selected data on the countryside and coast including national designations and length of the coastline (where relevant).

The model also includes contextual and sector-specific data from third-party sources and destination-level business performance data captured by or on behalf of our destination partners. Data sources include:

- Tourism business counts - Inter Departmental Business Register (IDBR)
- UK inflation data - Consumer Prices Index (CPI, CPIH), Retail Prices Index (RPI)
- UK economy forecasts - Office for Budget Responsibility: Economic and fiscal outlook
- Footfall data (town centres, large retail outlets and car parks).

### **Limitations of the Model**

It should be noted that the model cannot take into account any leakage of expenditure from tourists taking day trips out of the area in which they are staying. While it is assumed that these may broadly balance each other in many areas, in locations receiving significant numbers of day visitors from London, there is likely to be an underestimate in relation to the number of overseas day visitors staying in holiday accommodation in London. Whilst it is important to be aware of these issues, we are confident that the estimates we have produced are as reliable as is practically possible within the constraints of the information available.

### **Rounding**

All figures used in this report have been rounded. Therefore, in some tables there may be a slight discrepancy between totals and sub totals.

### **Staying Visitors**

Data on domestic overnight visits is based on a new combined online survey that replaced the separate Great Britain Tourism Survey and Great Britain Day Visits Survey. It provides information on the total number of trips to the region and the relative proportions using different types of accommodation. By matching these figures to the supply of such accommodation, the regional average number of trips per bedspace or unit of accommodation can be derived. The International Passenger Survey (IPS) provides information on the total number of trips by overseas visitors to the region. The model uses three year rolling averages to reduce extreme highs and lows which are due to small sample sizes, rather than being a reflection on drastic changes in demand year-on-year.

### **Day Visitors**

Information on day trips at a regional level is available from a new combined online survey that replaced the separate Great Britain Tourism Survey and Great Britain Day Visits Survey. The new survey includes all leisure-related trips from home. It should be noted that a large proportion are local trips made by people resident in the locality. The model uses information from the survey to estimate the number of longer day trips (defined as those lasting at least 3 hours and involving travel of more than 20 miles) and irregular trips lasting more than 3 hours.

### **Impact of tourism expenditure**

This section examines the impact of tourism expenditure in terms of the direct, indirect and induced expenditure as well as an estimate of actual jobs (both direct and indirect) supported by tourism expenditure in the county.

The above-mentioned surveys offer a breakdown of visitor spending. The impact of this initial round of expenditure will be subsequently increased by multiplier effects. These arise from the purchase of supplies and services by the businesses in receipt of visitor expenditure (indirect impacts), and by the income induced-effects arising from the spending of wages by employees in the first round of business and in subsequent expenditure in supplier business (induced impacts).

The New Earnings Survey which provides information on wage levels by industry sector and region is an internal business database which includes data on the structure of business expenditure, local linkages and multiplier ratios drawn from a wide range of business and economic studies carried out by Geoff Broom Associates, PA Cambridge Economic Consultants and others. By applying the breakdown to the estimates of visitor spending, the model generates estimates of total direct spending.

Evidence from national studies suggests that some minor adjustments are required to match visitor spend to business turnover – for example, some expenditure on food and drink actually takes place in inns and hotels that fall in the accommodation sector and within attractions. More significantly, expenditure on travel costs associated with individual trips is equally likely to take place at the origin of the trip as the destination. Therefore the model assumes that only 40% of travel expenditure accrues to the destination area.

### **Number of full time job equivalents**

Having identified the value of turnover generated by visitor spending, it is possible to estimate the employment associated with that spending. Wages for staff and drawings for the proprietors will absorb a proportion of that turnover. By applying these proportions to the overall additional turnover in each sector, the amount of money absorbed by employment costs can be calculated. The New Earnings Survey provides data from which the average costs by business sector, adjusted to take account of regional differences, can be calculated.

After allowing for additional costs such as National Insurance and pension costs, an average employment cost per full time equivalent job can be estimated. The number of such jobs in the local area can then be estimated by dividing the amount of business expenditure on wages and drawings by the average employment cost per job.

### **Number of Actual Jobs**

The model generates estimates of full time equivalent jobs based on visitor spending. However, the total number of actual jobs will be higher when part time and seasonal working is taken into account. The full time equivalent jobs arising directly from visitor spending are converted into actual jobs using information from business surveys in the sectors receiving visitor spending (principally accommodation, food and drink, retail, attractions, transport). In general, the conversion factor between full time equivalent jobs and actual jobs varies around 1.5 in those sectors.

The indirect and income-induced jobs arise across a much wider range of employment sectors. Therefore, the average 1.16 for all sectors based on Census of Employment data has been used to convert full time equivalent jobs in this sector to actual jobs.

The employment estimates generated by the model include both self-employed and employed people supported by visitor expenditure. The model also includes an estimate of the additional jobs arising in the attractions sector, which are not related to visitor expenditure. However, the numbers do not include other tourism-related employment such as jobs in local authorities arising from their tourism functions, e.g. tourist information staff, additional public health, parks and gardens, public conveniences, maintenance sections and jobs arising from capital investment in tourism facilities.

### **Local level data for Hertfordshire EIA Reports 2023**

The Cambridge Model allows for the use of local visitor related data. Local data from visitor surveys and other sources is not always sufficiently detailed or available regularly enough to make the results consistent. We rely on partners to collect additional locally sourced data to feed into the model.

Datasets used to produce the 2023 results include:

#### **Hertfordshire**

- Headline STR data including occupancy, ADR and RevPAR for 2023, 2022 and 2021.
- Any information on major openings or closures in 2023.
- Short-term rental accommodation data.

#### **Dacorum**

- Any information on major openings or closures in 2023.
- Annual Events (Armed Forces Day, Summer Carnivals in Kings Langley & Tring, Lark in the Park event in Gadebridge Park, Ashridge House outdoor cinema, Sausage & Cider festival Hemel Gadebridge Park, Tringe Comedy Festival, Steam Fayre).
- Footfall data for 2021 and 2023 across the high street/town centre areas for Hemel Hempstead (Marlowes), Hemel Old Town, Berkhamsted and Tring.

#### **East Herts**

- Footfall data for 2021 and 2023 for all 5 towns

#### **North Herts**

- Footfall data for each of the North Herts towns

#### **St Albans**

- Monthly footfall data reports from St Albans BID.
- Events in 2023 (St Albans Festival 2023, St Albans Food & Drink Festival 2023, Christmas Cracker 2023, Harpenden Christmas light switch on 2023, Pub in the Park 2023, Comedy Garden, Fireworks event and various events at the Cathedral).
- St Albans Cathedral figures and events.

#### **Welwyn Hatfield**

- Events (Lemsford Village Fete, Living Crafts, World Food Festival, Slam Dunk, Race for Life, Vintage Festival, Battle Proms, Folk by the Oak, Hatfield Community Fair, UK's Strongest Man, Screen on the Green, Classic Ibiza, Corona Festival, Fantastic Fireworks, Diwali Celebration).

**Produced by:**



Registered in England No. 9096970  
VAT Registration No. GB 192 3576 85

45 Colchester Road  
Manningtree  
CO11 2BA